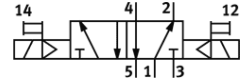
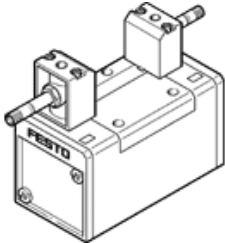



solenoid valve JMFH-5/2-D-2-C

Código da peça: 151852

FESTO



 [Condições gerais de operação](#)

[→ Portal de Suporte](#)

Especificações técnicas sobre confiabilidade do produto

As informações nesta "Folha de especificações sobre confiabilidade de produto" pressupõem que o produto seja usado conforme designado. Isso inclui o cumprimento de todas as especificações constantes em folhas de especificações técnicas, catálogos, documentação de usuário e nas condições gerais de operação. O usuário é exclusivamente responsável por definir se um produto é adequado para uma determinada aplicação.

Característica	Valor
Well-tried component ¹⁾	Yes
Service-life value B ₁₀ ²⁾	10 Mio SP
Fault exclusion	Bursting of the valve housing: externally directed failure of the material structure with a sudden release of the medium and associated pressure drop (according to ISO 5598, 3.2.85).
Design characteristics	Remains in switching position on signal switch-off (bistable valve)
Lap	Overlap
Vibration resistance	Transport application test with severity level 1 in accordance with FN942017-4 and EN 60068-2-6
Shock resistance	Shock test with severity level 2 in accordance with FN 942017-5 and EN 60068-2-27
Max. positive test pulse with 0 signal	2.200 µs
Max. negative test pulse with 1 signal	3.700 µs

- 1) The product is a well-tried product for a safety-related application according to ISO 13849-1. The relevant basic and well-tried safety principles according ISO 13849-2 for this product are fulfilled. The suitability of the product for a precise application must be verified and confirmed by the user.
- 2) The ascertainment of characteristic service life values is generally based on the ISO 19973 "Pneumatic fluid power - Assessment of component reliability by testing". Additional, B₁₀ values of 10 million cycles can also be based on the ISO 13849.